

GRAFTON PARKS AND RECREATION

CHESS CAMP

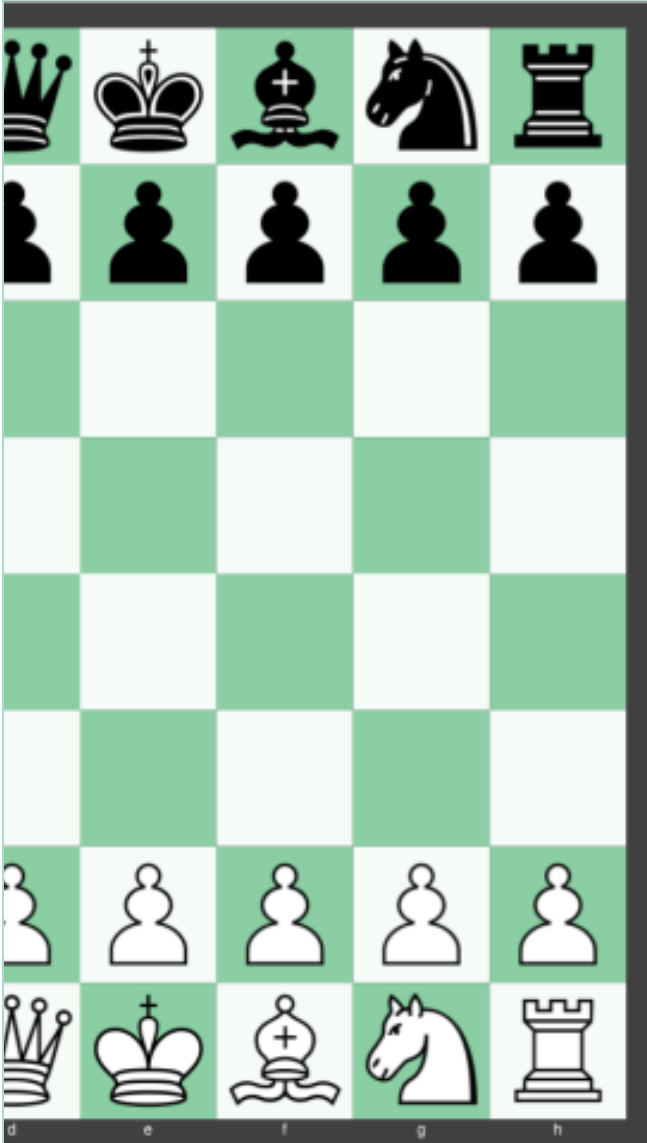
March 21 - 25, 2022

9:00 a.m. - 12:00 p.m.

**Robert P. Zaun Pavilion,
Lime Kiln Park**

**2020 S. Green Bay Road,
Grafton**

Fee: \$75.00



Students will focus on chess fundamentals to include opening strategy, the seven basic checkmates, and tactics such as Forks, Pins, and Discovered Check. For children in grades 2-8, who are new to chess or with ratings 0-600. Participants will receive a membership to www.chesskid.com. Register early; space is limited.

Register online at graftonrecreation.village.grafton.wi.us
or call the Grafton Parks and Recreation Department
at 262-375-5310.