



# 2017 Annual Program Budget

Village of Grafton Wisconsin

# VILLAGE BOARD



James A. Brunnuell  
Village President



Dave Antoine  
Village Trustee



David Liss  
Village Trustee



Thomas Krueger  
Village Trustee



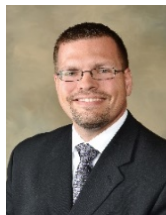
Susan Meinecke  
Village Trustee



Lisa Uribe Harbeck  
Village Trustee



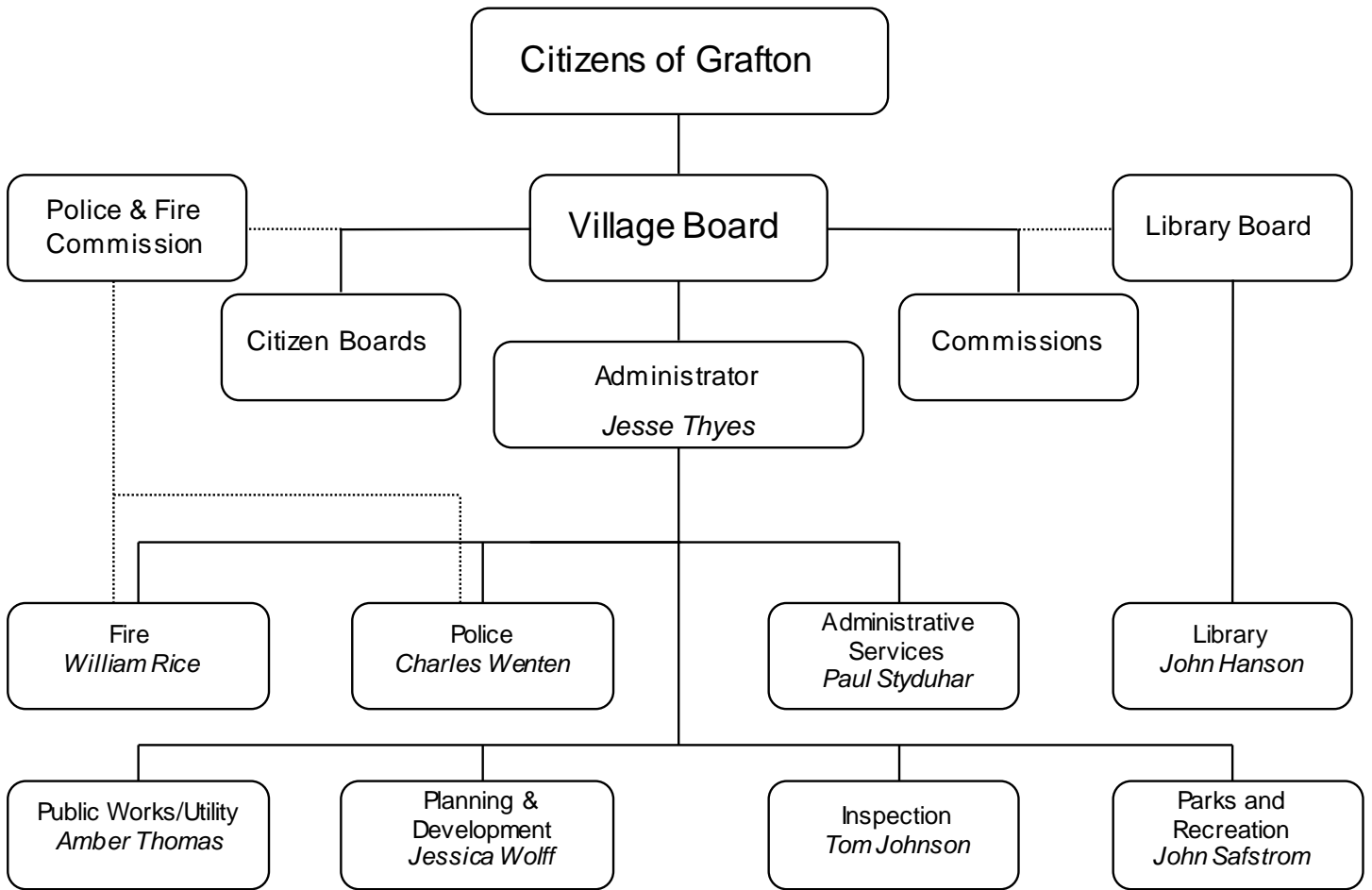
Dean Proefrock  
Village Trustee



Jesse Thyges  
Village Administrator

## VISION STATEMENT

“Grafton will embody its “Quality Life. Naturally.” brand with superb services, integrating natural resources and life enriching cultural experience to build pride in our community.”



Name

Jesse Thyes  
 Amber Thomas  
 Charles Wenten  
 William Rice  
 Jessica Wolff  
 Paul Styduhar  
 Tom Johnson  
 John Safstrom  
 John Hanson

Title

Village Administrator  
 Director of Public Works / Village Engineer / Utility  
 Police Chief  
 Fire Chief  
 Planning and Development Director  
 Administrative Services Director  
 Building Inspector  
 Parks and Recreation Director  
 Library Director

————— Functional Authority  
 ..... Appointment Authority

## Background/General Information



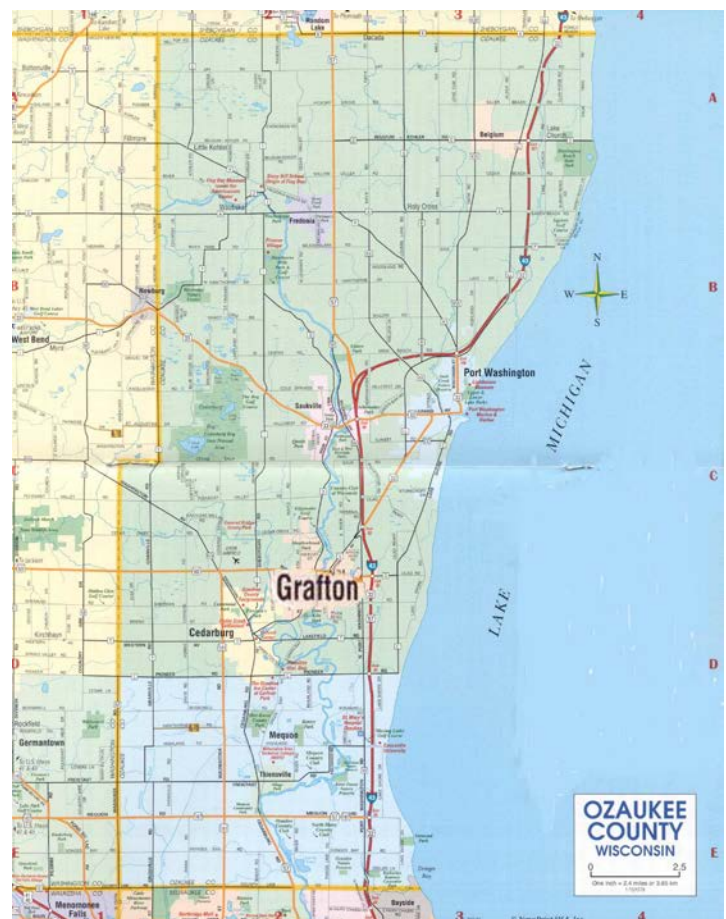
The area, now known as Grafton, is one of the oldest in Ozaukee County. In 1838, Timothy Wooden purchased approximately 145 acres of land, which would become the business district of Grafton.

By 1841, development was underway with the area comprised of mainly settlers of German descent. The Village was incorporated in 1896. During the next century, Grafton grew from a predominantly lumber oriented industry base to a community of many occupations. Today, Grafton has become a community of varied industries, including: bio-medical components, fabricated metal and plastic products, machinery, printing and publishing, electric and electronic equipment, and miscellaneous manufacturing concerns. In 2010, Aurora Health Care opened a state-of-the-art LEED Silver certified, national ranked regional medical center; a cancer center followed in 2012.

The Village of Grafton is located in Ozaukee County approximately 20 miles north of Milwaukee, is 5 square miles in size, and has an estimated 2015 population of 11,519. The Village is serviced by Interstate Highway 43, by State Trunk Highway 60, and by County Trunk Highways O, Q, V and W.

The Village operates under a “Council-Manager” form of government. Policymaking and legislative authority are vested in the elected governing body, which consists of seven part-time Board of Trustees including a Village President. The Board has policy setting authority, adopts the annual budget, approves large purchases and services of the governmental operations, appoints committees, and hires the Village Administrator. The Village Administrator is responsible for recommending and carrying out the policies and ordinances of the Board, appointing the directors of the Village’s departments (confirmed by the Board), submitting the proposed annual budget, advising the Board as to the financial condition of the Village, and overseeing the day-to-day operations.

The Police Department consists of 22 full-time sworn officers who provide around clock police protection. Under the leadership of a full-time Fire Chief, the Village is served by a 50 member volunteer Fire Department which provides fire protection and rescue service. A full service Parks and Recreation Department is available to meet the recreational needs of the community. The Multipurpose Senior Center provides educational and recreational opportunities for Grafton’s senior citizens. The Public Works Department is responsible for street maintenance, snow removal, park maintenance and overall village maintenance needs. The U.S.S. Liberty Memorial Public Library serves primarily the Village and the Town of Grafton. The Village of Grafton is serviced by a municipal water and wastewater treatment system.



The Village is served by the Grafton and Cedarburg School districts, offering comprehensive educational programs for student grades K-12. Grafton also has three parochial schools: St. Joseph Catholic School, St. Paul Lutheran School, and Our Savior Lutheran Church serving elementary level students. Within 25 miles of Grafton, the University of Wisconsin-Milwaukee, Marquette University, Concordia University-Wisconsin, Cardinal Stritch University, and Milwaukee Area Technical College provide excellent secondary educational opportunities for Grafton’s residents and workforce.

## DEMOGRAPHICS



### Area - Square Miles

2015	5.13
2014	5.13
2013	5.13
2012	5.13
2011	5.11
2010	5.11
2009	5.11
2008	5.11
2007	5.04
2006	4.47

### Population

2015	11,519
2014	11,490
2013	11,467
2012	11,464
2011	11,465
2010	11,459
2009	11,470
2008	11,450
2007	11,420
2006	11,380

### Age (2010)

Under 5 years	5.60%
5 to 19 years	19.30%
20 to 29 years	11.70%
30 to 39 years	12.40%
40 to 49 years	15.00%
50 to 59 years	15.10%
60 to 69 years	10.60%
70 to 79 years	6.20%
80 years and over	4.20%

### Education Attainment (2010)

(Population 25 years and over)	
Less than 9th Grade	1.7%
9th to 12th grade, no diploma	2.4%
High school graduate (includes equivalency)	26.4%
Some college, no degree	22.5%
Associate's degree	11.9%
Bachelor's degree	25.8%
Graduate or professional degree	9.3%

### Race (2013)

White*	94.00%
Asian	2.00%
Two or More Races	1.50%
Black or African American	0.04%
Some Other Race	0.01%
American Indian and Alaska Native	0.05%
* Hispanic	1.50%

### Housing Units (2015)

Total Dwelling Units	5,362
Single Family	53.0%
Duplex	9.9%
Multi-Family (Apartments)	23.7%
Multi-Family (Condominiums)	13.5%

### Major Employers (2015)

Aurora Medical Center	1,067
Pace Industries	500
Grafton School District	338
Rexnord Corporation - Plastics Div.	258
Calibre	250
Kapco	270
Costco	175
Target	170
Sendiks	155
Kohls	150

### Largest Property Taxpayers (2015)

	Equalized Value
Inland American Grafton Port Washington LLC	\$16,627,400
Costco	\$14,590,900
Meijers Limited Partnership	\$12,940,800
Grafton LLC	\$11,209,300
Tillmann Corporation	\$10,654,700
AMC Holdings LLC	\$ 9,375,400
Arrowhead Apartments LLC	\$ 8,761,800
Home Depot	\$ 8,600,300
Arrowhead Associates LLC	\$ 8,200,200
Hudson Corp (Target)	\$ 8,165,400

## DEMOGRAPHICS



### Building Permits

Year	Number	Value (millions)
2015	852	33.1
2014	932	32.6
2013	880	19.2
2012	836	11.6
2011	767	28.1
2010	801	14.1
2009	747	227.7
2008	1,024	53.8
2007	1,016	45.0
2006	937	20.1

### Occupational Composition (2010)

Managerial and Professional	48.30%
Technical, Sales and Administrative	18.90%
Production and Transportation	10.50%
Service Occupations	7.70%

### Employment Trends (Ozaukee County)

Year	Employment	Unemployment Rate
2015	47,832	3.6%
2014	44,942	5.2%
2013	44,972	5.2%
2012	44,706	5.7%
2011	44,203	6.0%
2010	43,552	6.8%
2009	42,296	6.9%
2008	47,050	3.3%
2007	46,467	3.6%
2006	46,019	3.8%

### Water / Wastewater (2015)

Active Accounts Served	4,899
Water Treated and Distributed (gallons)	365,125,000
Sanitary Sewers (miles)	54.79
Water Main (miles)	70.34

### Elections (2015)

	Registered Voters	Turn-out	Percent
Spring General	7,901	1,874	23.7%

### Parks

Year	Developed Parks	Acres Maintained
2015	17	120
2014	17	120
2013	17	120
2012	17	120
2011	17	120
2010	17	120
2009	17	120
2008	17	120
2007	17	120
2006	17	120

### Infrastructure (2015)

Miles of State Highway System	2.54
Miles of County Highway System	3.28
Miles of Local Roads and Streets	52.97
Miles of Sidewalks	82.93
Number of Street Lights	1,659

### School Registration (2015-2016)

Elementary Schools (Grades K-5)	954
John Long Middle School (Grades 6-8)	524
Grafton High School (Grades 9-12)	732

### Public Safety (2015)

Number of Police Stations	1
Number of Fire Stations	1
ISO Rating	3

### Number of Sworn Police Officers

2015	22
2014	22
2013	22
2012	22
2011	22
2010	22
2009	22
2008	22
2007	21

Source: Wisconsin Department of Revenue, Wisconsin Department of Administration, Village of Grafton Annual Financial Reports, and Village of Grafton Comprehensive Plan